

Directorate of General of Employment (Technical Wing)

AS(L&E)/DG(E)

DDG(E)

**Dir
(Emp)**

**JDE
(NCSC for
DA, NCSC for
SCs/STs, VG)**

**JDE
(NICS)**

**JDE
(NCS)**

**JDE
(Policy
Procedure)
MPG, EE-
I, EE(CNV)
PG**

**DD
(EMI, S
tats)**

**DDE
(PC(E)), DBT,
S&S**

ADE

DD(E)

**NCS(Coord)
Psy(1)
SSO(2)
JSO(1)**

**MP(G)
SSO(2)
JSO(2)**

**EMI
Section
SSO(1)
JSO(2)
CO(1)**

**DBT
SSO(1)
AEO(1)**

**EE-II(T)
NCSC for
DA
SSO(1)
JSO(1)**

ADE(3)

**OS(1)
PR(1)
Steno(1)**

**MCC
&IL,
Budget
AD(1)
JSO(1)
DEO(1)
JC(1)**

**CEE,
Ex-Cell
SSO(1)**

**Stats(E)
Section
SREO(1)
JSO(2)
DEO(2)
JC(2)**

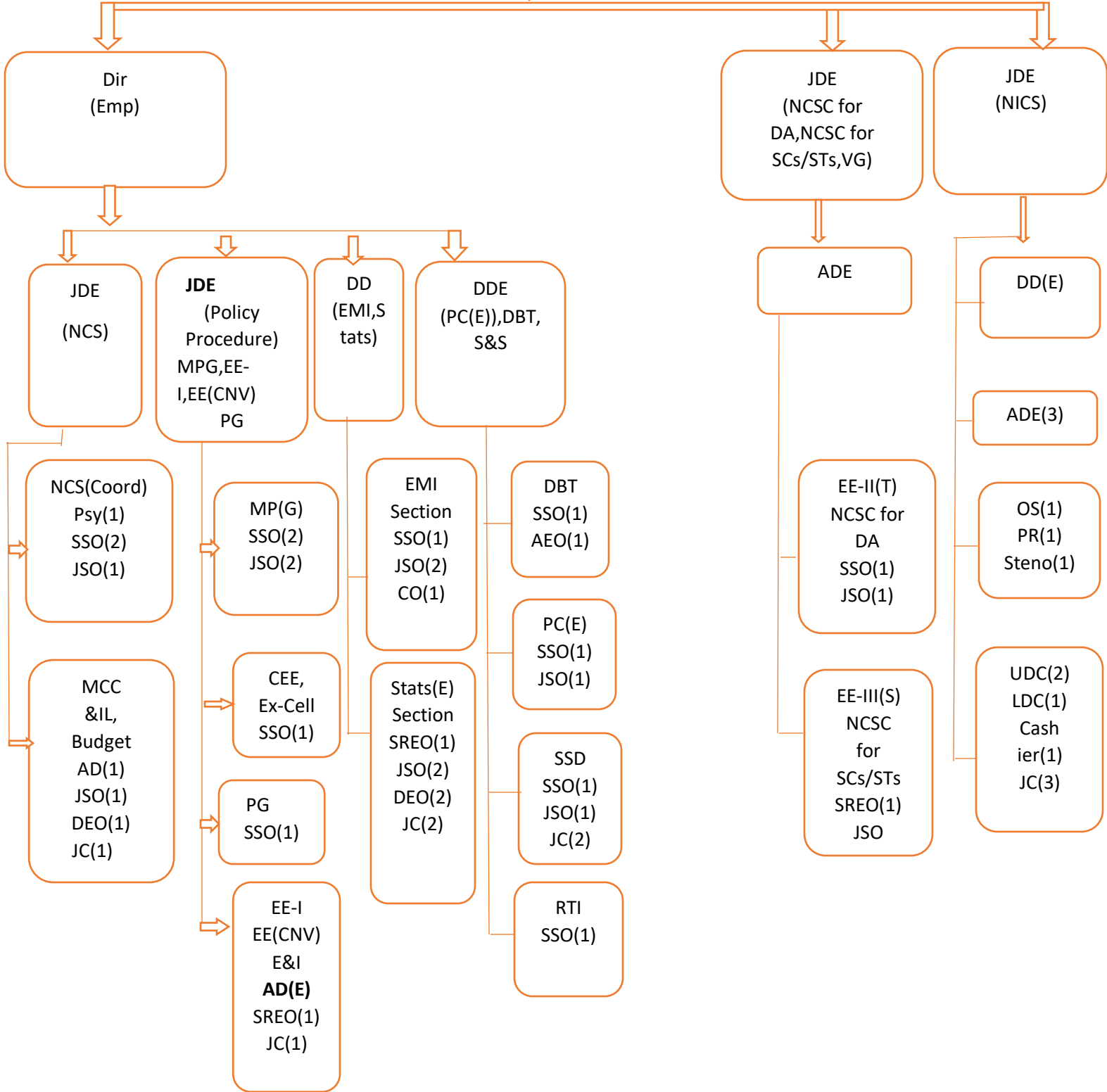
**PC(E)
SSO(1)
JSO(1)**

**EE-III(S)
NCSC
for
SCs/STs
SREO(1)
JSO**

**UDC(2)
LDC(1)
Cash
ier(1)
JC(3)**

**EE-I
EE(CNV)
E&I
AD(E)
SREO(1)
JC(1)**

**RTI
SSO(1)**



Directorate General of Employment (Administration Wing)

